

Product Highlights

Flexibility and Reliability

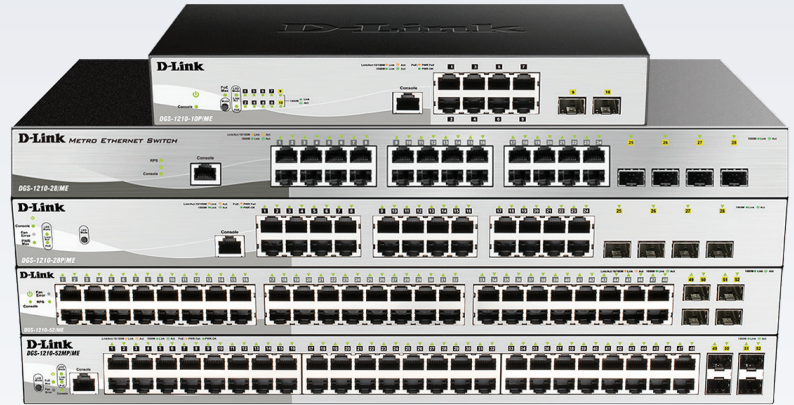
A combination of RJ-45 and SFP ports with PoE options provides the necessary flexibility to adapt to a wide range of applications and environments

Security and Authentication Features

Robust security features, including the D-Link Safeguard Engine™, protect against malicious attacks, while authentication tools allow access control

High Bandwidth

Up to four Gigabit SFP ports provide maximum throughput, reduce latency, and provide bandwidth for future network expansion



DGS-1210/ME Series

Gigabit Managed Switches

Features

Flexible Hardware Design

- Available in multiple configurations:
 - Different combinations of 1000BASE-Tand Gigabit SFP ports
 - PoE and non-PoE variations
- Designed for standard 1U rack-mounting
- Rear panel RPS connector for an additional external power supply (for non-PoE models)

Layer 2 Features

- 16K MAC address table
- IEEE 802.1D STP, 802.1w RSTP, and 802.1s MSTP
- Loopback detection
- Supports IEEE 802.3ad Link Aggregation
- Port-based Q-in-Q
- VLAN Trunking

Security and Authentication

- Port security
- SSH/SSL
- IP-MAC-Port Binding (IMPB)
- Access Control List (ACL) and IEEE 802.1X
- Guest VLAN

Reliability and Maintenance

- Surge protection on all Gigabit Ethernet ports¹
- ITU-T G.8032 ERPS sub-50 ms protection and recovery
- Dying Gasp for quick trouble shooting during power failures or system shut downs

The DGS-1210/ME Series Gigabit Managed Switches provide a diverse range of Gigabit port densities to accommodate various enterprise and public sector connectivity needs. With optional PoE to conveniently power edge devices, SFP ports to extend network connectivity, and advanced Layer 2 functionalities, the DGS-1210/ME Series is ideal for any enterprise access layer or large multi-site deployment and allows businesses to build a more secure and efficient network with advanced network security features and QoS.

The DGS-1210/ME Series includes enhanced security features such as Safeguard Engine™, which protects the CPU from broadcast/multicast/unicast flooding, IP-MAC-Port Binding (IMPB), Access Control List (ACL), IEEE 802.1X port-based/host-based access control, guest VLAN, and RADIUS/TACACS+ authentication for strict access control to the network. A user-friendly web interface gives administrators access to advanced management features. The DGS-1210/ME Series also supports Command Line Interface (CLI) through Telnet, SSH and the console port.


D-Link Assist
Next Business Day Service

Your network is the backbone of your business. Keeping it running is essential, even if the unexpected happens. D-Link Assist is a rapid-response technical support service that replaces faulty equipment quickly and efficiently. Maximising your uptime and giving you the confidence that instant support is only a phone call away.

All D-Link products with 5-year or Limited Lifetime warranty come with complimentary Next Business Day Service. D-Link will send out a replacement product to you on the next business day after acceptance of a product failure. On receipt of the replacement product, you simply arrange the return of the defective product to us. Any products with a 2-year/3-year warranty can also benefit from the Next Business Day advance replacement service when the optional 3-year warranty extension has been purchased.

Find out more at eu.dlink.com/services

Technical Specifications		
Model Number	DGS-1210-28/ME	DGS-1210-52/ME
Hardware Version	B1	B1
Interface		
Size	<ul style="list-style-type: none"> • 19-inch standard rack-mount width • 1U height 	<ul style="list-style-type: none"> • 19-inch standard rack-mount width • 1U height
Interfaces	<ul style="list-style-type: none"> • 24 10/100/1000BASE-T • 4 1G SFP 	<ul style="list-style-type: none"> • 48 10/100/1000BASE-T • 4 1G SFP
Console Port	RJ-45 console port	
Other Port Standards & Functions	<ul style="list-style-type: none"> • IEEE 802.3i 10BASE-T Ethernet (twisted-pair copper) • IEEE 802.3u 100BASE-TX Fast Ethernet (twisted-pair copper) • IEEE 802.3ab 1000BASE-T Gigabit Ethernet (twisted-pair copper) <ul style="list-style-type: none"> • IEEE 802.3az compliance <ul style="list-style-type: none"> • Auto-negotiation • IEEE 802.3x Flow Control • IEEE 802.3z 1000BASE-X Gigabit Fiber 	
Network Cables	<ul style="list-style-type: none"> • UTP Cat. 5, Cat. 5e (100 m max.) 	
Full/Half-Duplex	<ul style="list-style-type: none"> • Full/half-duplex for 10/100 Mbps speeds • Full-duplex for 1000 Mbps speed 	
Media Interface Exchange	<ul style="list-style-type: none"> • Auto MDI/MDIX adjustment for all twisted-pair ports 	
LED	Power/Console/Fan Error (if with fan) (per device), Link/Active/Speed (per port)	
Performance		
Switching Capacity	56 Gbps	104 Gbps
64-byte Max. Forwarding Rate	41.7 Mpps	77.4 Mpps
MAC Address Table Size	16K entries	
CPU Memory	256 MB DDR3	
Packet Buffer	1.5 MB	3.0 MB
Flash Memory	32 MB	
Physical/Environmental		
MTBF	497,918 hours	381,999 hours
Acoustic (High/Low Speed)	0 dB(A)	49 dB(A) / 40 dB(A)
Heat Dissipation	60.12 BTU/hr	132.08 BTU/hr
Power Input	AC Input: 100 to 240 V AC, 50/60 Hz	
Battery Connection Input	<ul style="list-style-type: none"> • Rear RPS socket for connecting external lead-acid batteries • Battery status monitoring through CLI or SNMP 	
Maximum Power Consumption	19.14 W	38.35 W
Standby Power Consumption	8.21 W	21.49 W
Dimensions (W x D x H)	440 x 140 x 44 mm	440 x 210 x 44 mm
Ventilation	Fanless	1 x Smart fan
Weight	2.21 kg	3.31 kg
Power Surge Protection	All Gigabit Ethernet ports support IEC 61000-4-5 surge protection	
Operating Temperature	-5 to 50 °C (23 to 122 °F)	
Storage Temperature	-40 to 70 °C (-40 to 158 °F)	
Operating Humidity	10% to 90% non-condensing	
Storage Humidity	5% to 90% non-condensing	
EMI	FCC class A, CE class A, VCCI, BSMI, CCC	
Safety Certifications	CE, LVD, UL, CB	

Technical Specifications			
Model Number	DGS-1210-10P/ME	DGS-1210-28P/ME	DGS-1210-52MP/ME
Hardware Version	B1	B1	B1
Interface			
Size	<ul style="list-style-type: none"> • 11-inch standard rack-mount width • 1U height 	<ul style="list-style-type: none"> • 19-inch standard rack-mount width • 1U height 	<ul style="list-style-type: none"> • 19-inch standard rack-mount width • 1U height
Interfaces	<ul style="list-style-type: none"> • 8 10/100/1000BASE-T PoE • 2 SFP 	<ul style="list-style-type: none"> • 24 10/100/1000BASE-T PoE • 4 SFP 	<ul style="list-style-type: none"> • 48 10/100/1000BASE-T PoE • 4 SFP
Port Standards & Functions	<ul style="list-style-type: none"> • Ports 1 to 8 compliant with IEEE 802.3at 	<ul style="list-style-type: none"> • Ports 1 to 24 compliant with IEEE 802.3at 	<ul style="list-style-type: none"> • Ports 1 to 8 compliant with IEEE 802.3at • Ports 9 to 48 compliant with IEEE 802.3af
Console Port	<ul style="list-style-type: none"> • RJ-45 console port 		
Other Port Standards & Functions	<ul style="list-style-type: none"> • IEEE 802.3i 10BASE-T Ethernet (twisted-pair copper) • IEEE 802.3u 100BASE-TX Fast Ethernet (twisted-pair copper) • IEEE 802.3ab 1000BASE-T Gigabit Ethernet (twisted-pair copper) <ul style="list-style-type: none"> • IEEE 802.3az compliance <ul style="list-style-type: none"> • Auto-negotiation • IEEE 802.3x Flow Control • IEEE 802.3z 1000BASE-X Gigabit Fiber 		
Network Cables	<ul style="list-style-type: none"> • UTP Cat. 5, Cat. 5e (100 m max.) 		
Full/Half-Duplex	<ul style="list-style-type: none"> • Full/half-duplex for 10/100 Mbps speeds • Full-duplex for 1000 Mbps speed 		
Media Interface Exchange	<ul style="list-style-type: none"> • Auto MDI/MDIX adjustment for all twisted-pair ports 		
LED	Power/Console/Fan Error (if with fan) (per device), Link/Active/Speed (per port)		
Performance			
Switching Capacity	20 Gbps	56 Gbps	104 Gbps
Forwarding Method	Store-and-forward		
MAC Address Table Size	16K entries		
MAC Address Update	Up to 256 static MAC entries		
64-byte Max. Forwarding Rate	14.88 Mpps	41.7 Mpps	77.4 Mpps
CPU Memory	256 MB DDR3		
Packet Buffer	1.5 MB		3.0 MB
Flash Memory	32 MB		
Physical/Environmental			
MTBF	315,336 hours	331,699 hours	272,910 hours
Acoustic (High/Low Speed)	0 dB(A)	52.9 dB(A) / 45.3 dB(A)	50.1 dB(A) / 40.4 dB(A)
Heat Dissipation	307,703 BTU/hr	857.98 BTU/hr	1636.16 BTU/hr
Power Input	AC Input: 100 to 240 V AC, 50/60 Hz		
Maximum Power Consumption	101.7 W (PoE on) / 17.9 W (PoE off)	251.5 W (PoE on) / 28.7 W (PoE off)	479.5 W (PoE on) / 54.4 W (PoE off)
Maximum PoE Budget	78 W	193 W	370 W
Standby Power Consumption	11.1 W	16.1 W	31.6 W
Dimensions (W x D x H)	280 x 180 x 44 mm	440 x 210 x 44 mm	440 x 430 x 44 mm
Ventilation	Fanless	2 x Smart fans	3 x Smart fans
Weight	1.92 kg	3.34 kg	6.04 kg
Power Surge Protection	All Gigabit Ethernet ports support IEC 61000-4-5 surge protection		
Operating Temperature	-5 to 50 °C (23 to 122 °F)		
Storage Temperature	-40 to 70 °C (-40 to 158 °F)		
Operating Humidity	10% to 90% non-condensing		
Storage Humidity	5% to 90% non-condensing		
EMI	FCC class A, CE class A, VCCI, BSMI, CCC		
Safety Certifications	CE, LVD, UL, CB		

Software		
L2 Features	<ul style="list-style-type: none"> • MAC address table: 16K entries • Spanning Tree Protocols <ul style="list-style-type: none"> - 802.1D STP - 802.1w RSTP - 802.1s MSTP - BPDU filtering - Root restriction • Loopback detection 	<ul style="list-style-type: none"> • Mirroring <ul style="list-style-type: none"> - Support 1 mirroring group - Support One-to-One, Many-to-One, Flow-based (ACL) mirroring for ingress traffic • L2 Protocol Tunneling (L2PT) • Link aggregation <ul style="list-style-type: none"> - Compliant with 802.3ad - Supports max. 8 groups, 8 ports per group
L2 Multicasting	<ul style="list-style-type: none"> • IGMP Snooping <ul style="list-style-type: none"> - IGMP v1/v2 snooping, v3 awareness - IGMP authentication/filtering - Supports 256 groups - VLAN/host-based IGMP snooping fast leave - Report suppression 	<ul style="list-style-type: none"> • MLD Snooping <ul style="list-style-type: none"> - MLD v1, MLD v2 awareness - Supports 256 groups
VLAN	<ul style="list-style-type: none"> • 802.1Q tagged VLAN • VLAN group • Max. 4094 VLAN groups • Port-based VLAN • GVRP • Asymmetric VLAN • Max. 256 dynamic VLAN 	<ul style="list-style-type: none"> • 802.1v protocol VLAN • VLAN trunking • MAC-based VLAN • Port-based Q-in-Q • ISM VLAN (multicast VLAN) • Private VLAN
L3 Features	<ul style="list-style-type: none"> • Max. 256 ARP entries • Supports 255 static ARP entries • Static route <ul style="list-style-type: none"> - 64 IPv4 static routes - 32 IPv6 static routes 	<ul style="list-style-type: none"> • Supports Gratuitous ARP • Default route • 4 IP interfaces
Quality of Service (QoS)	<ul style="list-style-type: none"> • CoS based on: <ul style="list-style-type: none"> - Switch port - 802.1p priority queues - VLAN ID - MAC address - IPv4/IPv6 address - DSCP - TOS - Protocol type - TCP/UDP port - IPv6 traffic class 	<ul style="list-style-type: none"> • Bandwidth control <ul style="list-style-type: none"> - Port-based (ingress, min. granularity 64 Kbps) - Flow-based (ingress, min. granularity 64 Kbps) - Egress queue bandwidth control (min. granularity 64 Kbps) • Queue handling <ul style="list-style-type: none"> - Strict priority - Weighted Round Robin (WRR) • 8 outbound queues
Access Control List (ACL)	<ul style="list-style-type: none"> • ACL based on <ul style="list-style-type: none"> - Switch port - 802.1p priority - VLAN ID - MAC address - EtherType - TOS - IPv4/v6 address - DSCP - Protocol type - IPv4/IPv6 TCP/UDP port number - ICMP - IPv6 traffic class 	<ul style="list-style-type: none"> • Up to 256 ingress access rules • ACL action (permit/deny/mirror) • Time-based ACL • ACL statistics • CPU interface filtering
Authentication, Authorization, and Accounting (AAA)	<ul style="list-style-type: none"> • 802.1X <ul style="list-style-type: none"> - Host-based access control - Port-based access control • Guest VLAN • Host-based MAC authentication • RADIUS accounting 	<ul style="list-style-type: none"> • TACACS+ accounting • User account privilege (4 level user access) • MAC-based access control <ul style="list-style-type: none"> - Max. 512 entries when using local database • Authentication for management access <ul style="list-style-type: none"> - Local, RADIUS, TACACS+ database
Security	<ul style="list-style-type: none"> • SSH v2 • SSL v1/2/3 • Port security (Up to 64 MAC addresses per port) • IP-MAC-Port Binding (IMPB) <ul style="list-style-type: none"> - ARP inspection - IP inspection - IPv6 DHCP snooping • Broadcast/Multicast/Unicast storm control 	<ul style="list-style-type: none"> • D-Link Safeguard Engine • DHCP server screening • DHCP client filtering • BPDU attack protection • DoS attack prevention • Traffic segmentation

DGS-1210/ME Series Gigabit Managed Switches

Operations, Administration, and Maintenance (OAM)	<ul style="list-style-type: none"> • 802.3ah Ethernet Link OAM <ul style="list-style-type: none"> - Supports 802.3ah link layer remote loopback and discovery (System log and SNMP) - 802.3ah D-Link extension: D-link Unidirectional Link Detection (DULD), (System log and SNMP) 	<ul style="list-style-type: none"> • Cable diagnostics • Dying Gasp • Supports optical transceiver digital diagnostics monitoring (DDM)
Management	<ul style="list-style-type: none"> • Web-based GUI (IPv4/IPv6) • Command Line Interface (CLI) • Telnet Server/Client (Support IPv4/IPv6) • TFTP client (IPv4) • Command logging • SNMP v1/v2c/v3 • SNMP traps • System log • RMON v1 • RMON v2 • LLDP • BootP/DHCP client • DHCP auto-configuration • Text-editable config file 	<ul style="list-style-type: none"> • Trusted host • DHCP relay (IPv4/IPv6) <ul style="list-style-type: none"> - DHCP relay agent/local relay - DHCP relay option 12, 18, 37, 38, 82 • PPPoE Circuit-ID tag insertion • Trap/alarm/log severity control • CPU monitoring • SNTp • LLDP-MED (for PoE models only) • Debug command • Password recovery • Password encryption • Backdoor password
MIB	<ul style="list-style-type: none"> • RFC1212 Concise MIB Definitions • RFC1213 MIB II • RFC1215 MIB Traps Convention • RFC1065, 1151, 2578 MIB Structure • RFC1493 Bridge MIB • RFC1157, 2573, 2575, 2576 SNMP MIB • RFC3418 SNMPv2 MIB • RFC2819 RMON MIB • RFC2021 RMONv2 MIB • RFC1643, 1650, 2665 Ether-like MIB 	<ul style="list-style-type: none"> • RFC2674 802.1p MIB • RFC 2233 Interface Group MIB • RFC 2618 RADIUS authentication client MIB • RFC 2620 RADIUS accounting client MIB • RFC3289 D-Link Zone Defense MIB • RFC4022 MIB for TCP • RFC4113 MIB for UDP • PoE MIB • DDP MIB • LLDP-MED MIB
IETF Standard	<ul style="list-style-type: none"> • RFC768 UDP • RFC791 IP • RFC792 ICMPv4 • RFC2463, 4443 ICMPv6 	<ul style="list-style-type: none"> • RFC793 TCP • RFC826 ARP • RFC1321, 2284, 2865, 2716, 3580 Extensible Authentication Protocol (EAP)
IPv6	<ul style="list-style-type: none"> • RFC1981 Path MTU Discovery • RFC2460 IPv6 • RFC2461, 4861 Neighbor Discovery 	<ul style="list-style-type: none"> • RFC2462, 4862 IPv6 Stateless Address Auto-configuration • RFC2893, 4213 IPv4/IPv6 dual stack function
Redundant Power Supply (Non-PoE Models Only)		
DPS-500A	Redundant Power Supply	
DPS-CB150-2PS	150 cm RPS cable for connecting DGS-1210-28/ME, 52/ME, and DPS-500A	
Optional SFP Transceivers		
DEM-310GT	1000BASE-LX, Single-mode, 10 km	
DEM-311GT	1000BASE-SX, Multi-mode, 500 m	
DEM-312GT2	1000BASE-SX, Multi-mode, 2 km	
DEM-211	100BASE-FX, Multi-mode, 2 km (for DGS-1210-28ME only)	

¹ All Gigabit Ethernet ports of the DGS-1210/ME Series switches support up to 6 kV surge protection.

Please note that the latest firmware for the DGS-1210-28/ME B1 (v7.00) is not backwards compatible with A1 hardware.



For more information: eu.dlink.com

D-Link (Deutschland) GmbH, Schwalbacher Strasse 74, 65760 Eschborn, Germany
 D-Link (Europe) Ltd, Artemis Building, Odyssey Business Park, West End Road, South Ruislip HA4 6QE, United Kingdom
 Specifications are subject to change without notice. D-Link is a registered trademark of D-Link Corporation and its overseas subsidiaries.
 All other trademarks belong to their respective owners. ©2022 D-Link Corporation. All rights reserved. E&OE.

Updated May 2022

D-Link[®]
 Building Networks for People